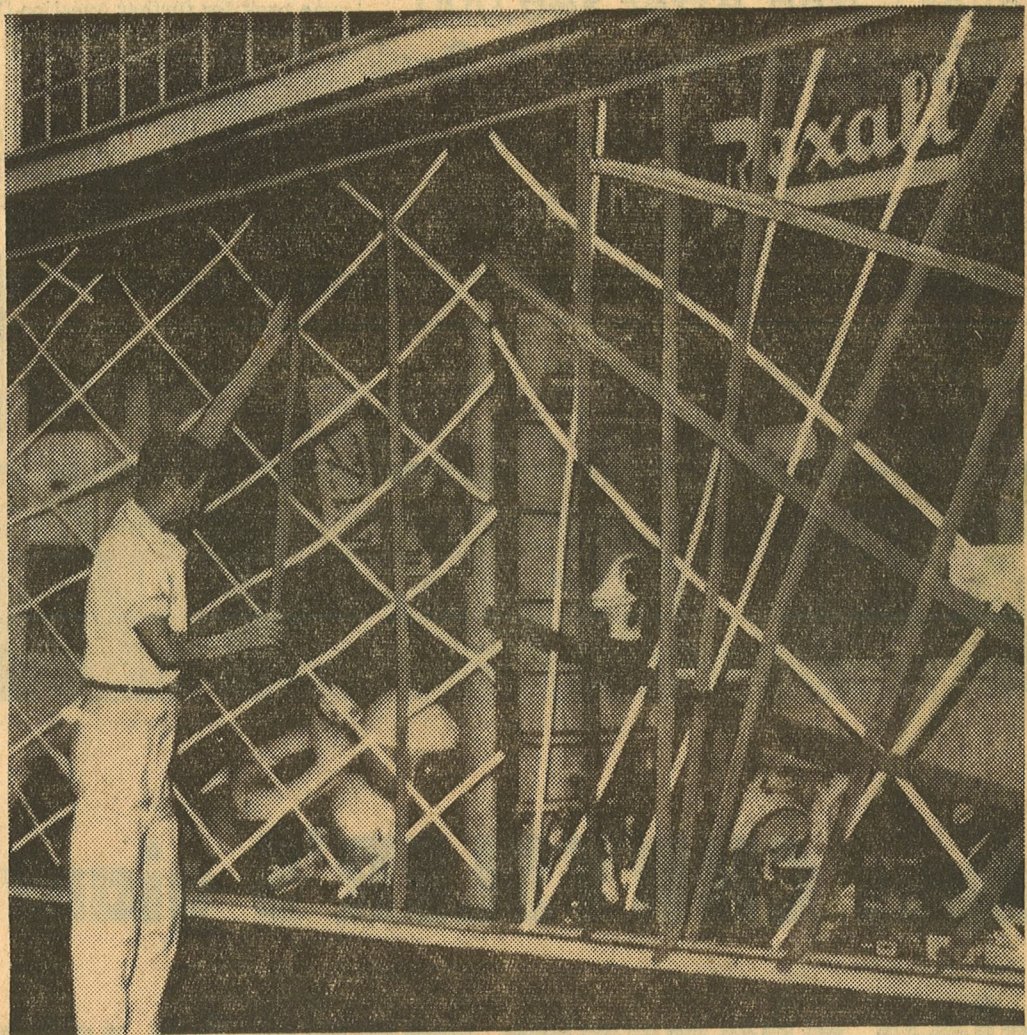


SIMILAR PATHS—Path of Hurricane Connie thus far is shown on map, by comparison with routes of worst 1954 storms. Note how path of Hurricane Hazel last fall was generally similar to Connie's. Hazel struck into the North-South Carolina coast from an area a bit southwesterly from Connie's present site.

—Associated Press Wirephoto Map.



PREPARED—Sam Mason, owner of a } tapping up his windows to try to ward off the
drug store at Virginia Beach, Va., is shown } force of Hurricane Connie.

—International News Soundphoto.